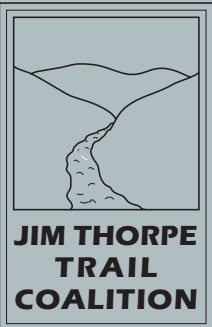
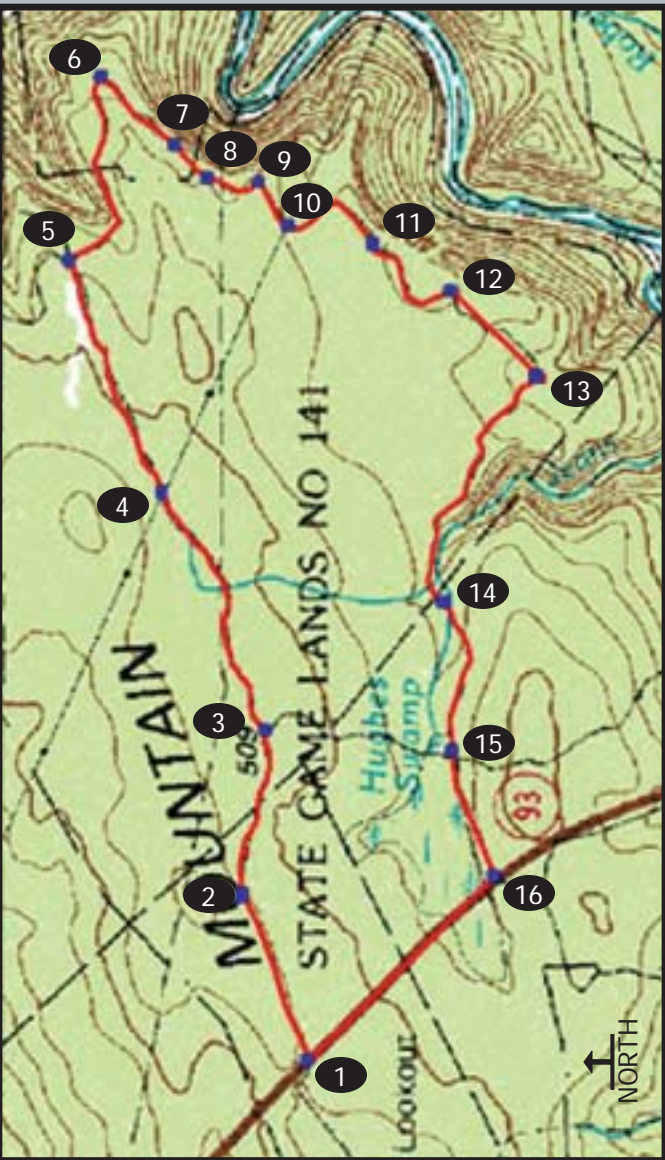


Broad Mountain Loop Jim Thorpe Pa.



Directions to trailhead: From Hazard Square in downtown Jim Thorpe take Rt. 209 South past the train station. Go straight through the traffic light at the bridge. Continue towards Nesquehoning. At the intersection with SR 93 North make a right onto 93. Continue up the steep hill, once it levels off look for the dirt parking lot on the right, continue past it (16). Pull into the second large dirt parking lot on the right.

Broad Mountain Loop Jim Thorpe Pa.

1 ↑	Go past SGL yellow gate and onto fireroad.	9 T	Right at Tee, left goes to overlook of Oxbow Bend.
MILE 0	430931E4528269N T18	5.1	436487E4528578N T18
2 ↑	Continue straight past turnoff for the Deer Path trail.	10 ↑	Continue straight across powerline.
0.8	431966E4528681N T18	5.3	436196E4528387N T18
3 T	Continue straight at intersection with Hughes Swamp Road.	11 Y	Veer right at intersection.
1.3	433014E4528541N T18	5.4	436094E4527847N T18
4 ↑	Continue straight across powerline.	12 Y	Veer right at intersection. Left goes to nice overlook.
2.4	434502E4529183N T18	5.7	435782E4527362N T18
5 T	Turn Right at Tee, left goes to Pine Tar Trail.	13 Y	Cross Creek and continue right on fire road.
3.4	435994E4529769N T18	6.9	435279E4526839N T18
6 ↑	Stay Straight at intersection. Left to overlook of Gorge.	14 ↑	Cross over Creek.
4.2	437140E4529580N T18	8.1	433827E4527404N T18
7 ↑	Stay straight at intersection.	15 ↑	Continue straight at intersection with Hughes Swamp Road.
4.8	436716E4529121N T18	8.7	432873E4527357N T18
8 ↑	Stay straight at intersection.	16 T	Turn Right SR 93, follow road to parking lot.
4.9	436520E4528906N T18	10.2	432100E4527094N T18

10.20 miles and not much climbing. Currently the only "trail" open to mountain bikes on Broad Mt. due to Game Land Regulations (as of Feb 2003, but we are working on changing it). All fire road, some a little rocky. Two stream crossings and some nice views of the Lehigh Gorge. Fast, non-technical ride. Not a very good hike.